



Reconnecting people with nature through art

Ronnie de Camino Velozo

Ibero-American Model Forest Network

Tropical Agricultural Research and Education Centre (CATIE)



International
Model Forest
Network



*Can't you see the museum for
the trees?*

Aknowledgments:

Frank Cardoza, Roger Villalobos, Fernando Carrera,
Marie-Eve Landry, Kaley Lachapelle, Sonia Martel,
Alvaro Picardo, Miguel Segur, Fernando Carrera,
Roberto Vides, Eufraan Amaral, Paula Rico, Miguel
Angel Blanco, Cynthia Mora, Rodolfo Sagot and
Charles Veiman.

The source of inspiration

- Man and society are becoming more and more disconnected from nature.
- Science is disconnected from humanism.
- What inspires me: the space given for art and nature in the Spanish Forestry Congress in Avila in 2009, where a special session was programmed for this purpose.
- In any scientific congress, special sessions to promote the connection of trees and forests with society and people should be planned.
- Maybe we should also design sessions that connect nature with poetry and literature in all fora, symposiums and congresses.

Nature is beautiful,
the forests are beautiful.







....but we destroy it...











...and we are disconnected from it
to such a degree, that we prefer a
shopping mall...



**...instead of a real
natural park for our
families and children...**



But luckily we are start to appreciate
nature these days



Interior and exterior designs are attempting to provide aesthetic, beauty and ecosystem services, such as clean air, protection of individual trees in construction projects or a view to nearby parks from the windows of hospital rooms

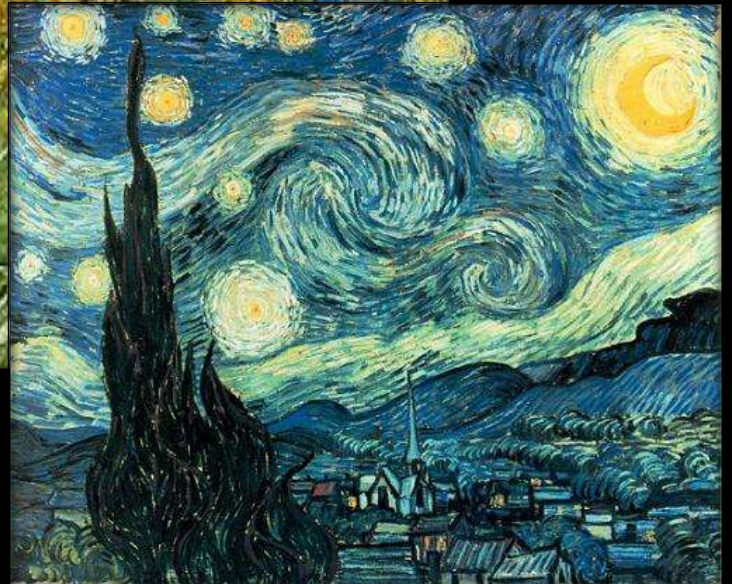
Biophilia in Practice: Buildings that Connect People with Nature



There are also signals of a growing
love for nature.....



Nature has been a model for artists
since the beginning of time



...there are parks of sculptures in
many places...



...street theatre has flourished again...



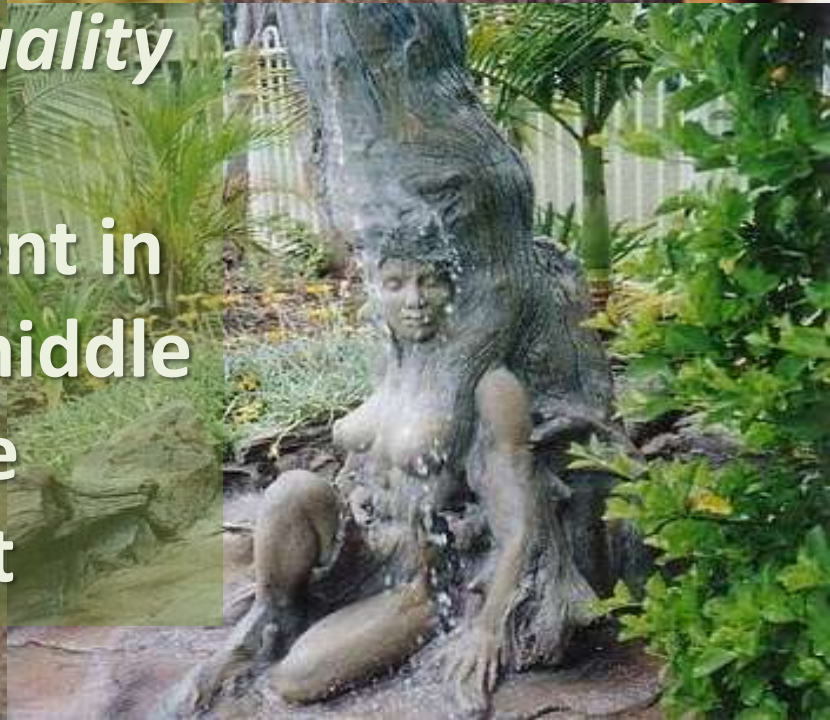
...and original new formats appear...



*Beauty
Love
Force
Sympathy
Optimism
Passion*



*Sensuality
are
present in
the middle
of the
forest*



...what about the forests and the trees themselves, what about art over trees and landscapes?

Not too much art has been developed over the trees themselves.

There are only few cases. Maybe the most notable that I know is the Spanish artist Ibarrola in the pine forest of Oma and some ephemeral sculptures with trees.

The so called “Land Art” is also intervening in some landscapes...





Agnieszka Gradzik and Wiktor Szostalo



...Mi own Museum in the Forest...

Some time ago, tired and dissappointed with the destruction of nature and the lack of relation between man and nature, I went into the forest and suddenly I was confronted with an enormous Ficus tree...



...and what I really saw was an unicorn
with nine legs ridden by Don Quixote
of the Mancha.



I imagined that it could be beautiful to have a museum where the trees would serve as canvas and where artists could deploy their art works on top of it through paintings or interventions....

I convoked my dear old friends Banksy, Pombo, Diego Rivera, Piet Mondrian, Joan Miró, Pablo Picasso, Vassarely, Friedrich Hundertwasser, Marc Chagall, Guayasamín, Salvador Dalí and others, to have a talk around some bottles of wine in order to imagine something different, unconventional, challenging, and provocative....



...and they accepted
the challenge...



...and they painted
the “first Museum in the Forest”
in a virtual forest of my own that I
made available and that I present you
now...















**...and now, waking up from that dream...
We have brought it to reality...**

Inside the Botanical Garden of CATIE, located in Turrialba, Costa Rica, and inside the Reventazón Model Forest territory, we made a painting on the bark of a tree and its official «vernissage» will be dedicated in honor to the International Year of Forests.



The young artist who painted the tree is Charles Veiman Jr. from Costa Rica.

It represents Mother Earth and the spirits of the forest that invite people to discover nature, its beauty, secrets, functions and services.

The artist dedicated the work to his father, Charles Veiman, a forester who loved forests and trees...

This is the reason why the painting has been dedicated to try to reconnect nature and society...









The painted tree will be presented officially to the public in September 2011 during a special event that will combine the vernissage with a music concert played by a prominent artist and will be offered as a support to the efforts of the International Year of Forests coordinated by FAO.

**We invite the Model Forests that share our vision to
join us by:**

- selecting a colossal tree and invite an artist to make a painting or any other artistic intervention on it;
 - intervening a landscape through “Land Art”;
 - making a wooden sculpture on a fallen tree;
 - making an intervention with sounds and lights;
- or any other expression of art on a tree or in a forest.

...and to offer it as an artistic event to their respective societies with the aim to reconnect them to nature through art and dedicate it to the International Year of Forests of FAO...

**Some Model Forests and interested territories are
already participating in this idea:**

Argentina, Brazil, Camerún, Canadá, Costa Rica and
Paraguay.

The painted and intervened trees and forests will be
inaugurated during the year 2011 in special events such
as music concerts, theatre or traditional rites.

These initiatives will bring attention to people about trees, forests and nature. They will also be the foundation stones of possible Museums in the Forests in different parts of the world.

...and all this, centered in our Model Forests.

Such an initiative will provide visibility to Model Forests in the society and will help to promote the objectives of the international Year of Forests.

Now I want to invite on the stage the representatives of the Model Forests that are already committed to this unconventional initiative, because nature will be rescued from destruction only with broad, unconventional and insolent actions...



Thank you so much for your attention and
join us in this wonderful adventure!



International
Model Forest
Network

